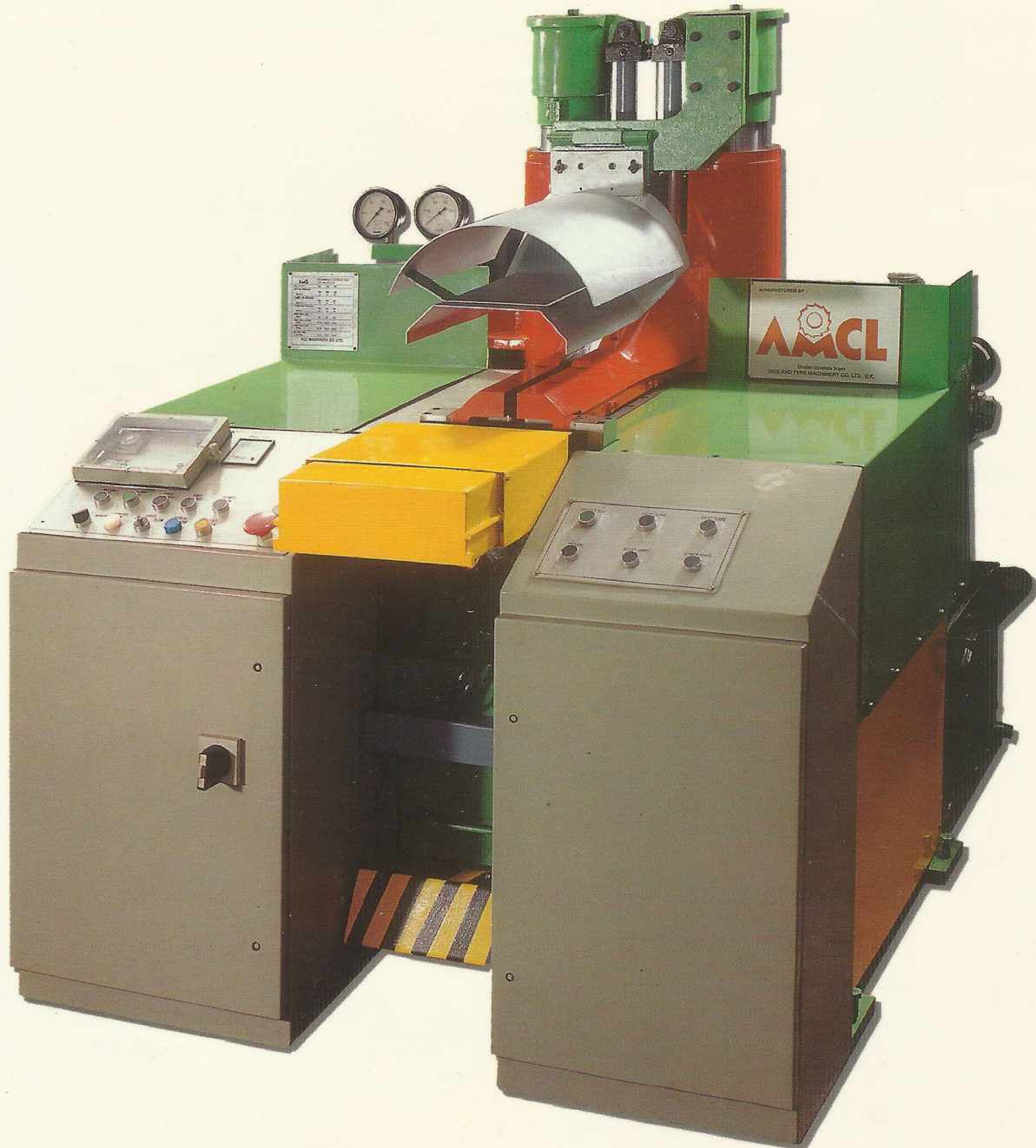


TUBE SPLICER



In Technical Collaboration with MIDLAND TYRE MACHINERY CO., LTD., U.K.



AMCL Machinery Ltd.
(HNGIL Group of Companies)

ACC Machinery Company Limited

AMCL is the pioneer, indigenously producing the widest range of machinery for the Rubber and Tyre Industry. Offering turnkey solutions in this field, its range of equipment are designed to meet stringent international standards with adaptability to exacting work conditions. AMCL strives hard to maximize productivity with assured quality.

Inner Tube Splicing Machines

The Inner Tube Splicing Machines are the mainstay in tube manufacturing plants. Their reliability is important to ensure consistent high strength tube joints and tubes durability.

AMCL - MIDLAND's comprehensive range of Tube Splicing Machines are acclaimed as the most advanced systems and provide the end user with a range of advantages. Their Microprocessor based Control System simplifies the complex sequences into simple and straight forward tasks for the operator.



Model	900	1100	1200
Tube Flat Width Maximum	200 mm	500 mm	750 mm
Tube Flat Width Minimum	20 mm	120 mm	450 mm
Double Thickness			
Standard	20 mm max.	20 mm max.	20 mm max.
Special	28 mm	28 mm	28 mm
Minimum Unspliced Tube Length			
Standard	800 mm	800 mm	1200 mm
Special	650 mm	650 mm	-
Machine Height (Approx)	1900 mm	1900 mm	2300 mm
Machine Width (Approx)	1600 mm	1600 mm	2100 mm
Machine Depth (Approx)	1600 mm	11600 mm	1700 mm
Nett Weight (Approx)	2500 Kgs	2500 Kgs	5000 Kgs
Tubes Per Cycle	Two	One	One
Approximate Machine Cycle Time	25-40 Seconds	20-35 Seconds	30-55 Seconds
Electrical Supply	6.5 KW at 415V, 3 Phase, 50 Hertz (Voltage and Frequency to suit customers requirements)		

Model 900 can be supplied with additional conversion kit to convert it to Model 1100 for splicing range of tubes from 20mm to 450mm in flat width.

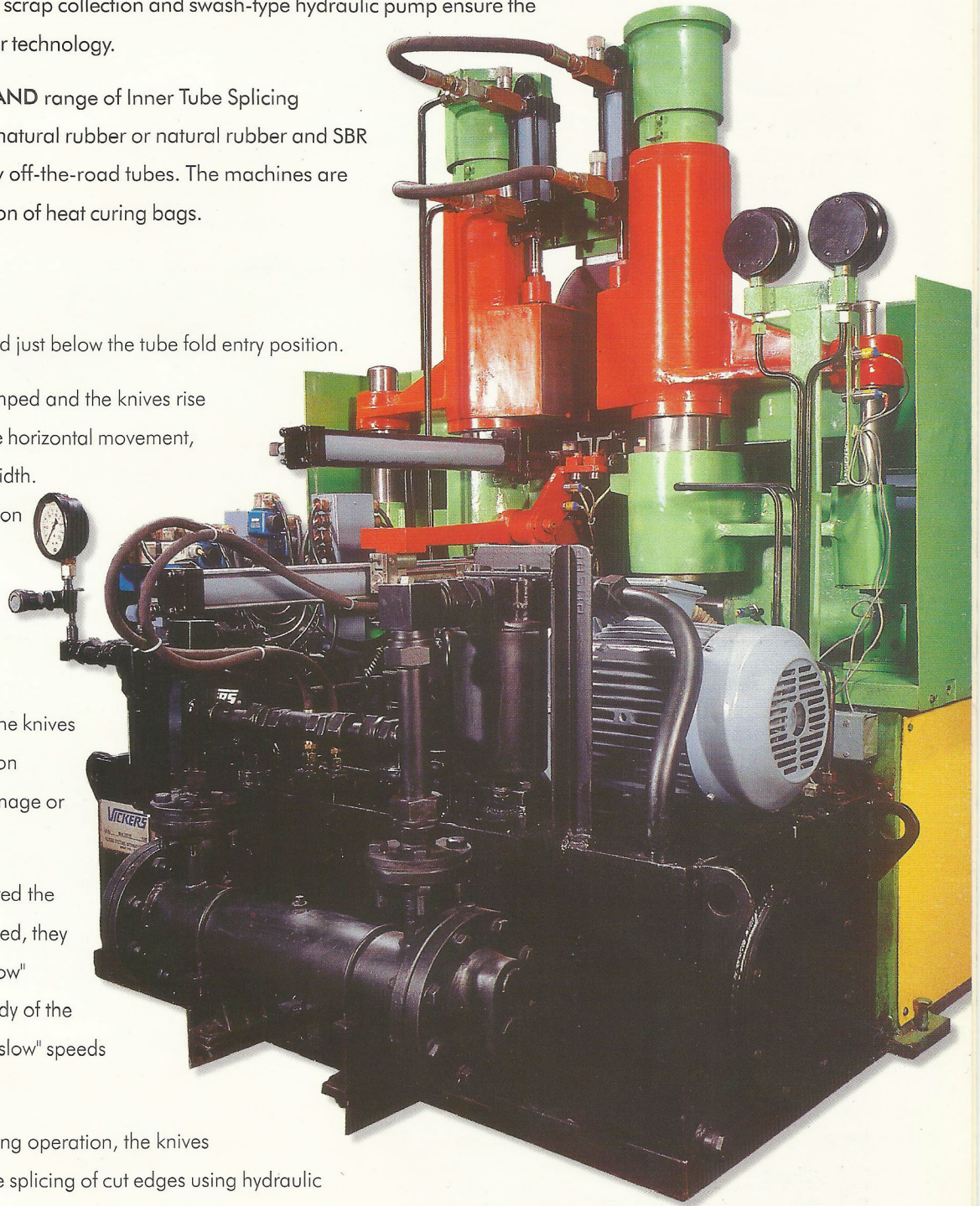
AMCL - MIDLAND'S Tube Splicers are enhanced with advanced features such as :

- Dropping knife blades • Precision knife guidance systems • State-of-the-art knife heat control
- Solid state electrical control. Other special features such as hydraulic adjustment of tube width, simple knife cleaning facility, gravity scrap collection and swash-type hydraulic pump ensure the product's leadership in Splicer technology.

The standard AMCL - MIDLAND range of Inner Tube Splicing machines will join butyl and natural rubber or natural rubber and SBR blends, from bicycle to heavy off-the-road tubes. The machines are also suitable for the production of heat curing bags.

Operation Sequence

- Heated knives are positioned just below the tube fold entry position.
- Immediately the tube is clamped and the knives rise automatically to commence horizontal movement, cutting the tube along its width. This ensures cutting operation without any delay.
- The knives travel in "creep" speed at the tube fold knife entry and exit points . This ensures free movement of the knives during tube cutting operation preventing the possible damage or distortion of the tube faces.
- Once the knives have cleared the entry fold area at creep speed, they automatically change to "slow" speed and cut the main body of the tube. Both the "creep" and "slow" speeds are fully adjustable.
- On completion of tube cutting operation, the knives immediately drop to enable splicing of cut edges using hydraulic pressure thus minimizing operation cycle time and maximising productivity.





... Yesterday's Pioneer ... Today's Leader.

Tyre Manufacturing Machinery From AMCL

For over two decades, AMCL has been turning the wheels of the Indian Tyre Industry, sourcing advance solutions from World leaders like Leonh Herbert Maschinenfabrik GmbH, Germany; Midland Tyre Machinery Co. Ltd., U.K.; Kobe Machinery Co. Ltd., Japan and KOBE STEEL, Ltd., Japan. Recognised as the pioneer in Rubber and Tyre machinery in India, AMCL shall remain the expert one stop source for all requirements of the industry. It stands committed to provide innovative technology advances to the emerging needs of its valued customers.



AMCL Works, Butibori.



AMCL Machinery Ltd.
(HNGIL Group of Companies)

A-1/1, MIDC, **Butibori** - 441 122, Dist. Nagpur, Maharashtra, INDIA.

☎ : 91 - 7103 - 62723, 62724 Fax : 91 - 7103 - 62893, 62725

email : marketing@amclbb.com